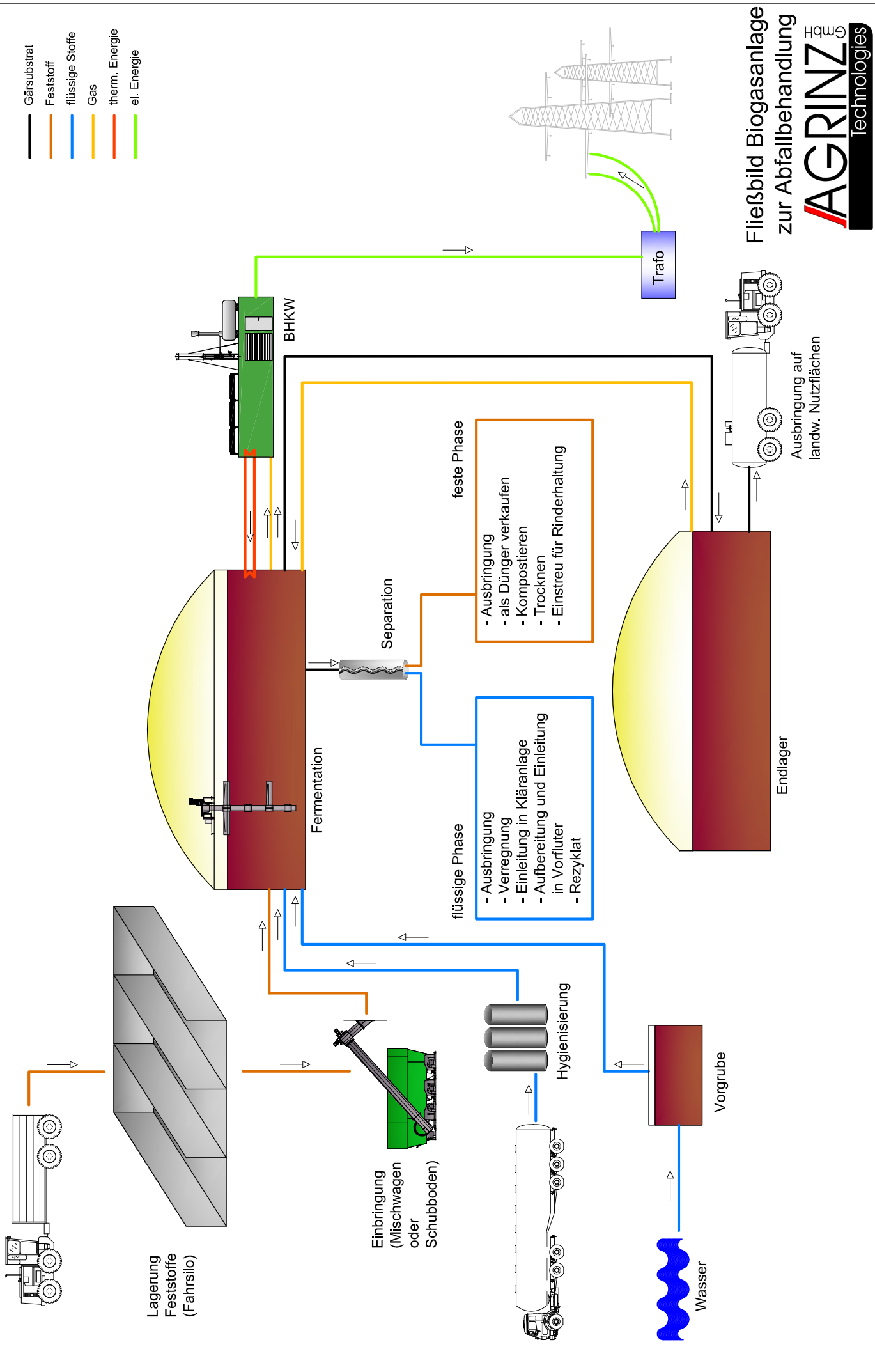
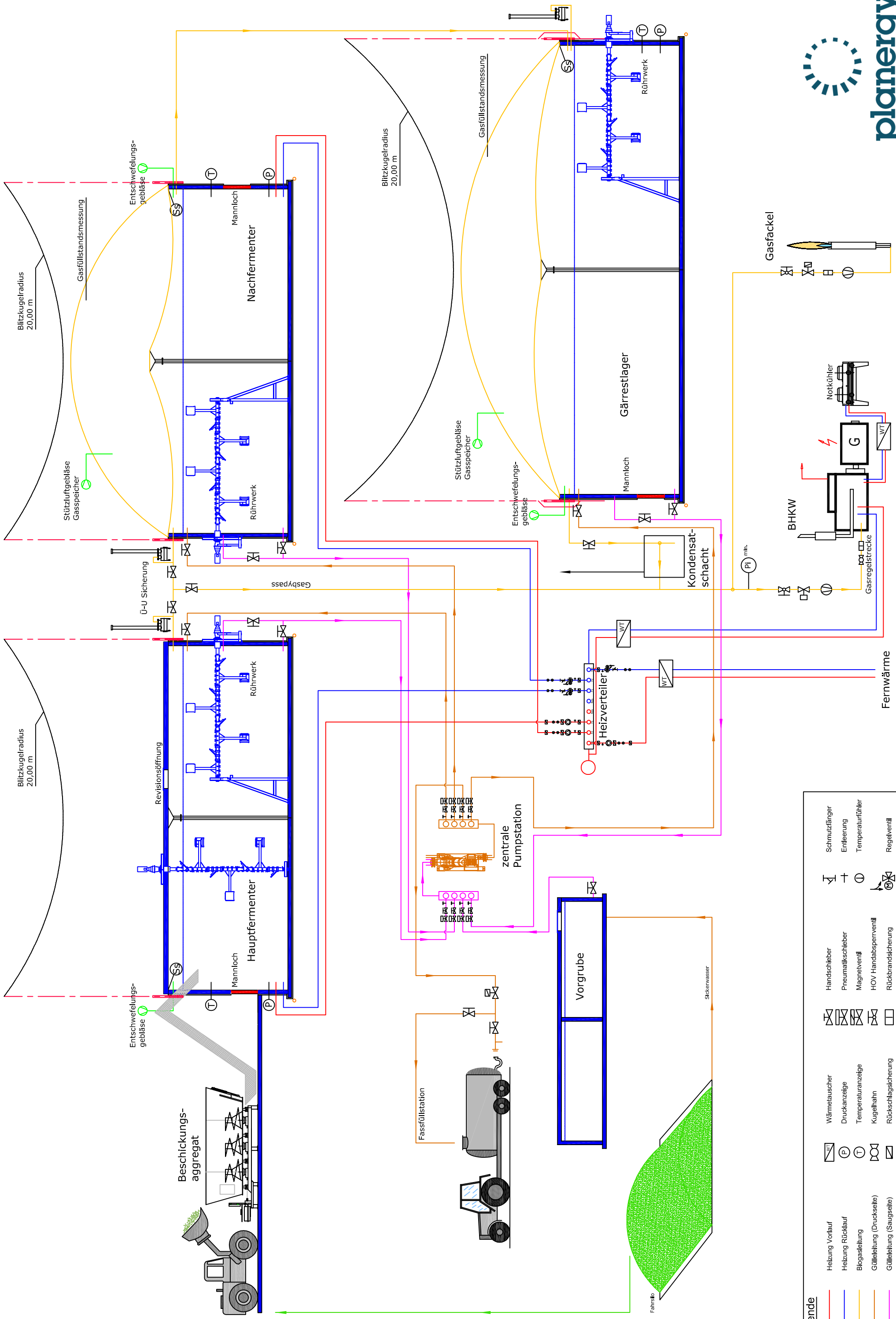


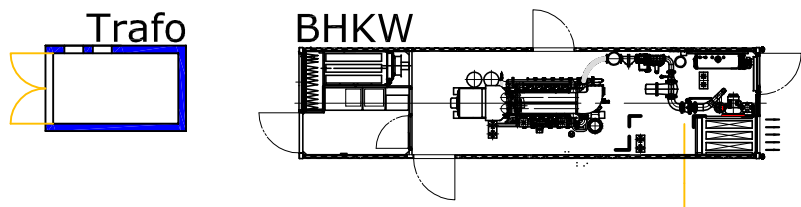
- Gärsubstrat
- Feststoff
- flüssige Stoffe
- Gas
- therm. Energie
- el. Energie



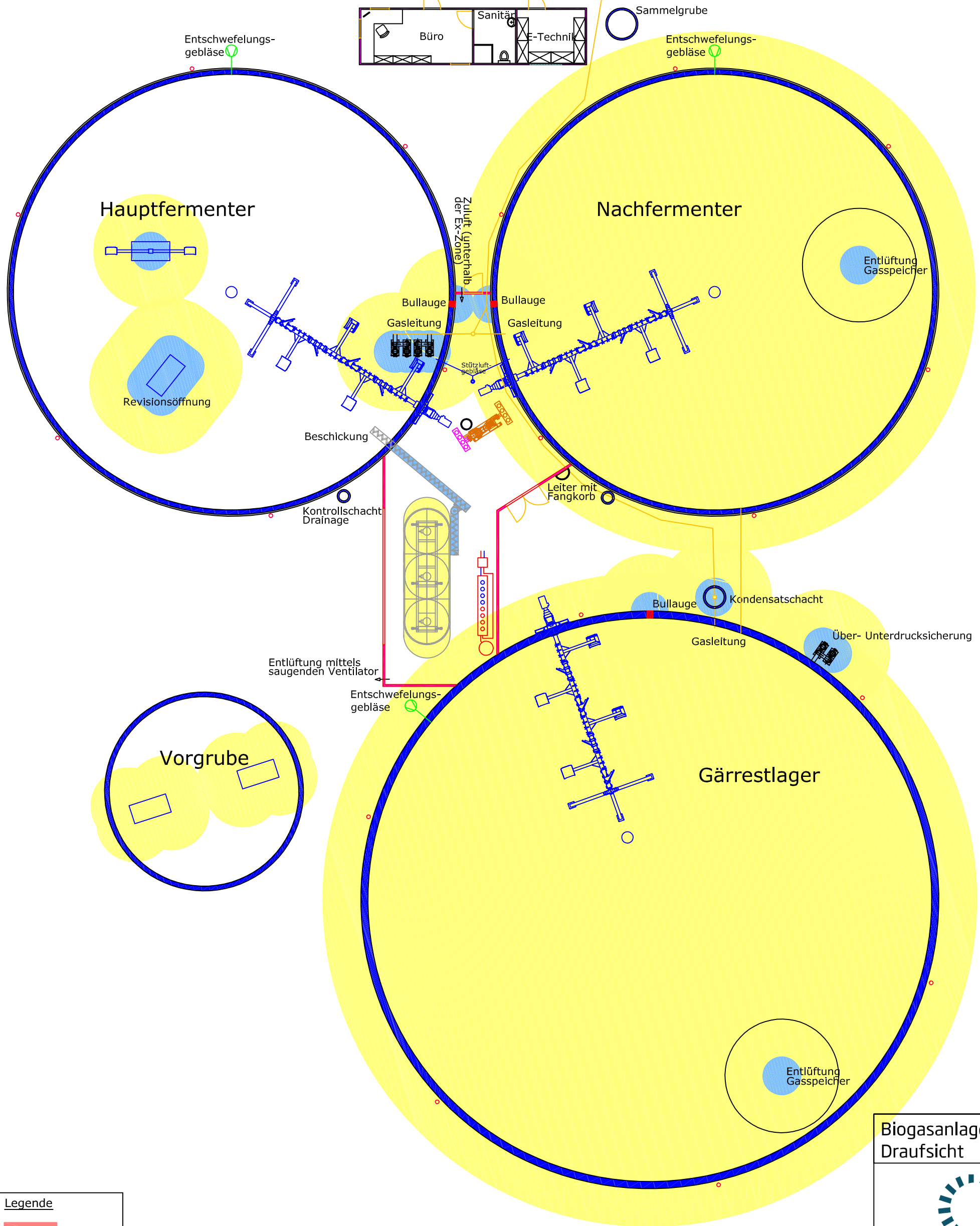
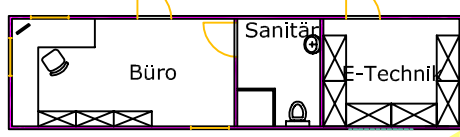


Legende

Heizung Vorlauf	Wärmetauscher	Wärmehaube	Schmutzfänger
Heizung Rücklauf	Druckanzeige	Handschieber	Entleerung
Bilgasleitung	Temperaturanzeige	Pneumatikschieber	Temperaturfühler
Gülleleitung (Druckseite)	Kugelhahn	Magnetventil	Regelventil
Gülleleitung (Saugseite)	Rückschlagsicherung	HOV Handsperrenventil	Umwälzpumpe
Luftleitung	Strangregulventil	Rückbrandsicherung	Lüfter
		Absperklappe	
		Schwimmerschalter	



Brückenwaage

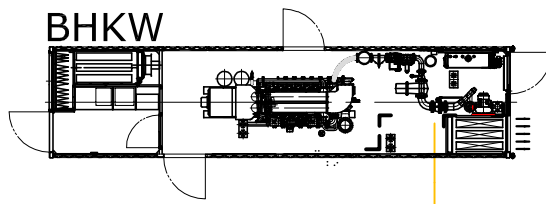
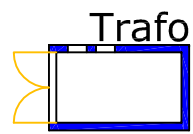


Legende

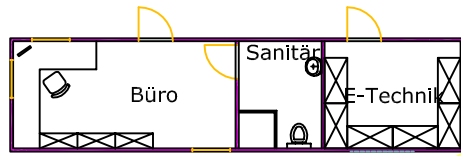
█	Ex-Zone 0
█	Ex-Zone 1
█	Ex-Zone 2

Biogasanlage NAWARO
 Draufsicht

www.planergy.at



Brückenwaage



Sammelgrube

Entschwefelungs-
gebläse

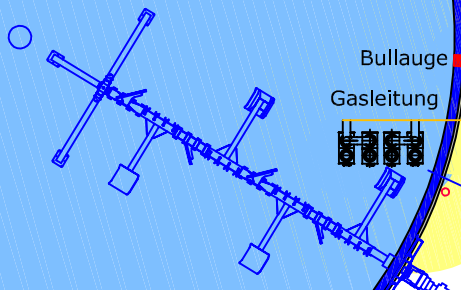
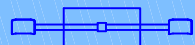
Entschwefelungs-
gebläse

3.00

3.00

Hauptfermenter

Nachfermenter



Bullauge

Gasleitung

Bullauge

Gasleitung

Zuluft (unterhalb
der Ex-Zone)

Stützluft-
gebläse

Kontrollschacht
Drainage

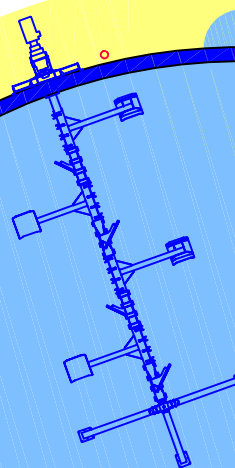
Leiter mit
Fangkorb

Entlüftung mittels
saugenden Ventilator

Entschwefelungs-
gebläse

3.00

Vorgrube



Bullauge

Gasleitung

Kondensatschacht

Über- Unterdrucksicherung

Gärrestlager

Legende

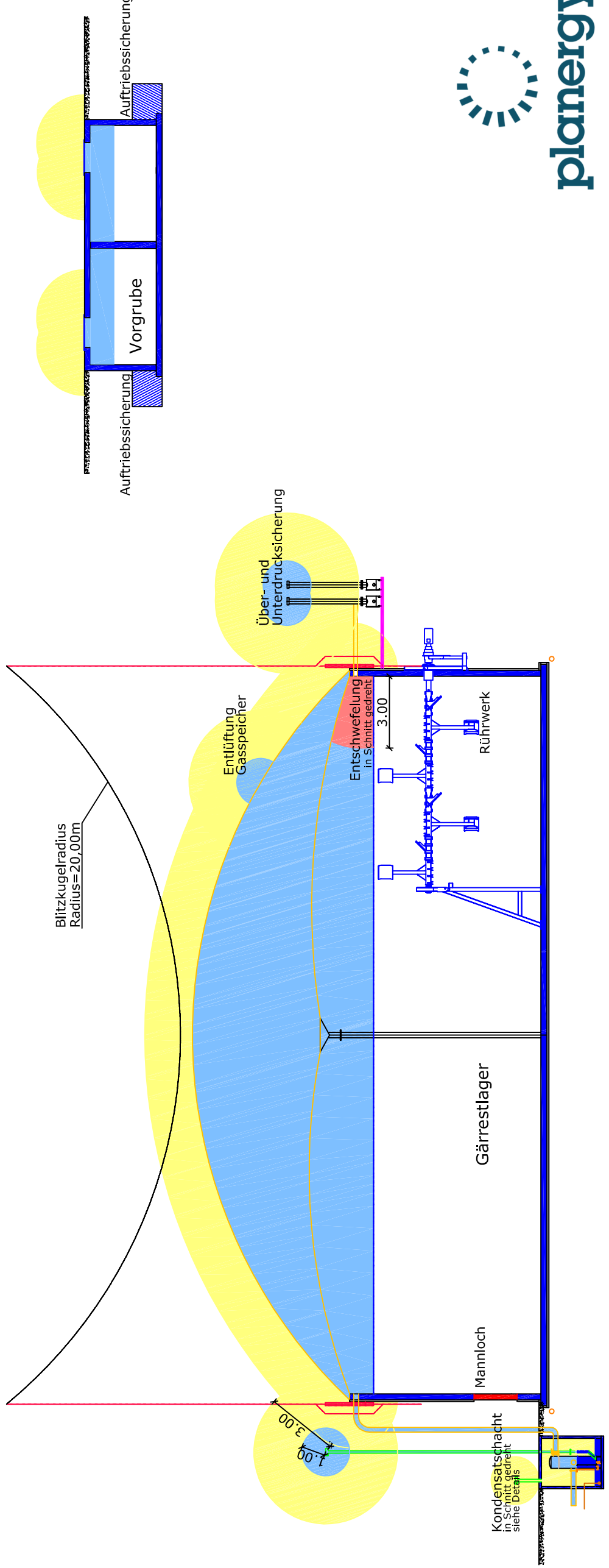
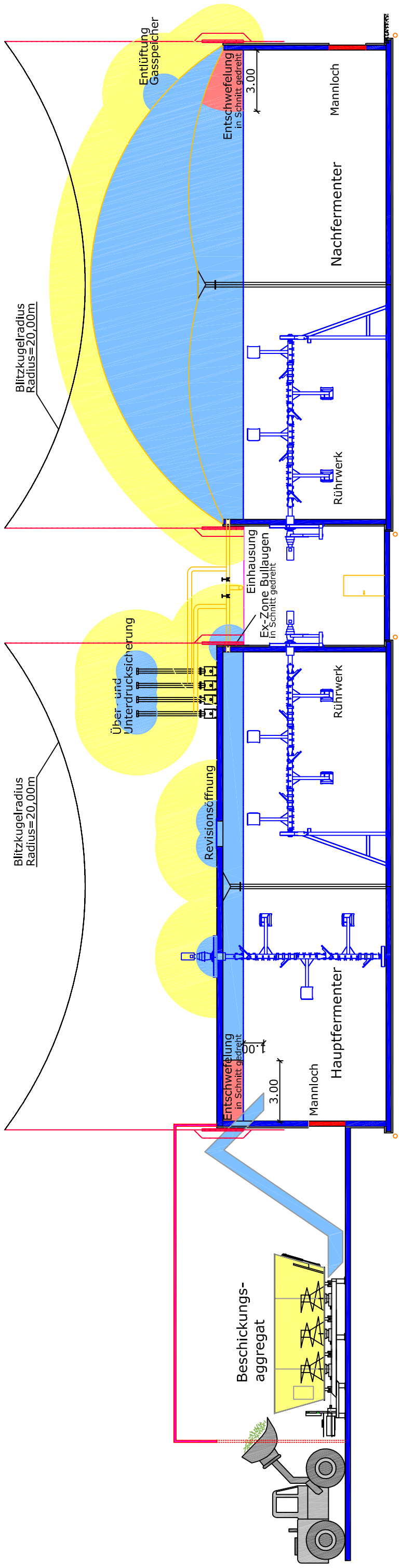
- Ex-Zone 0
- Ex-Zone 1
- Ex-Zone 2

Biogasanlage NAWARO
Grundriss



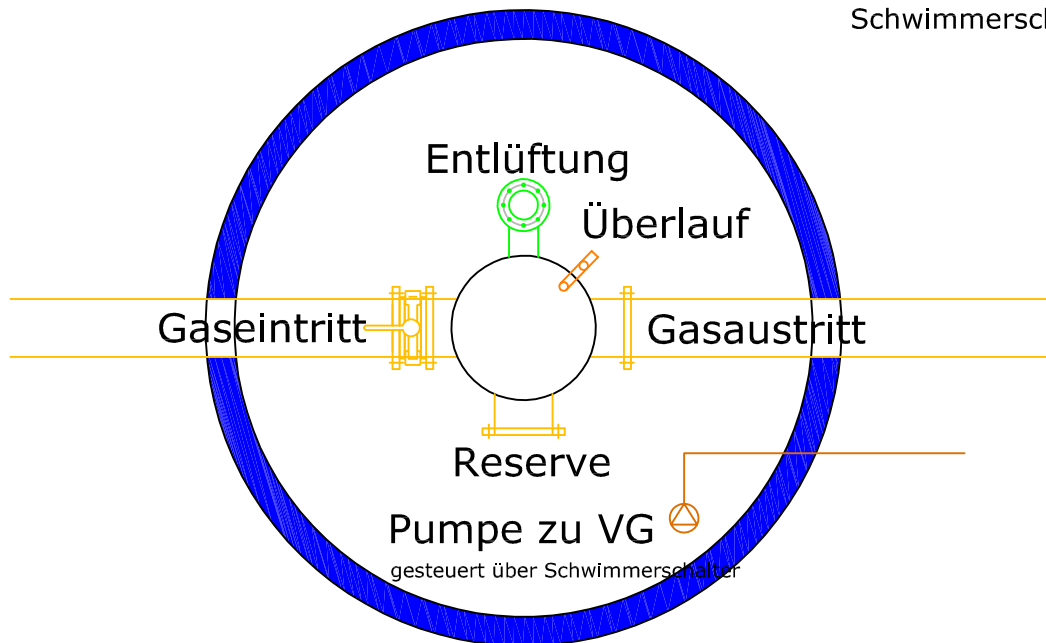
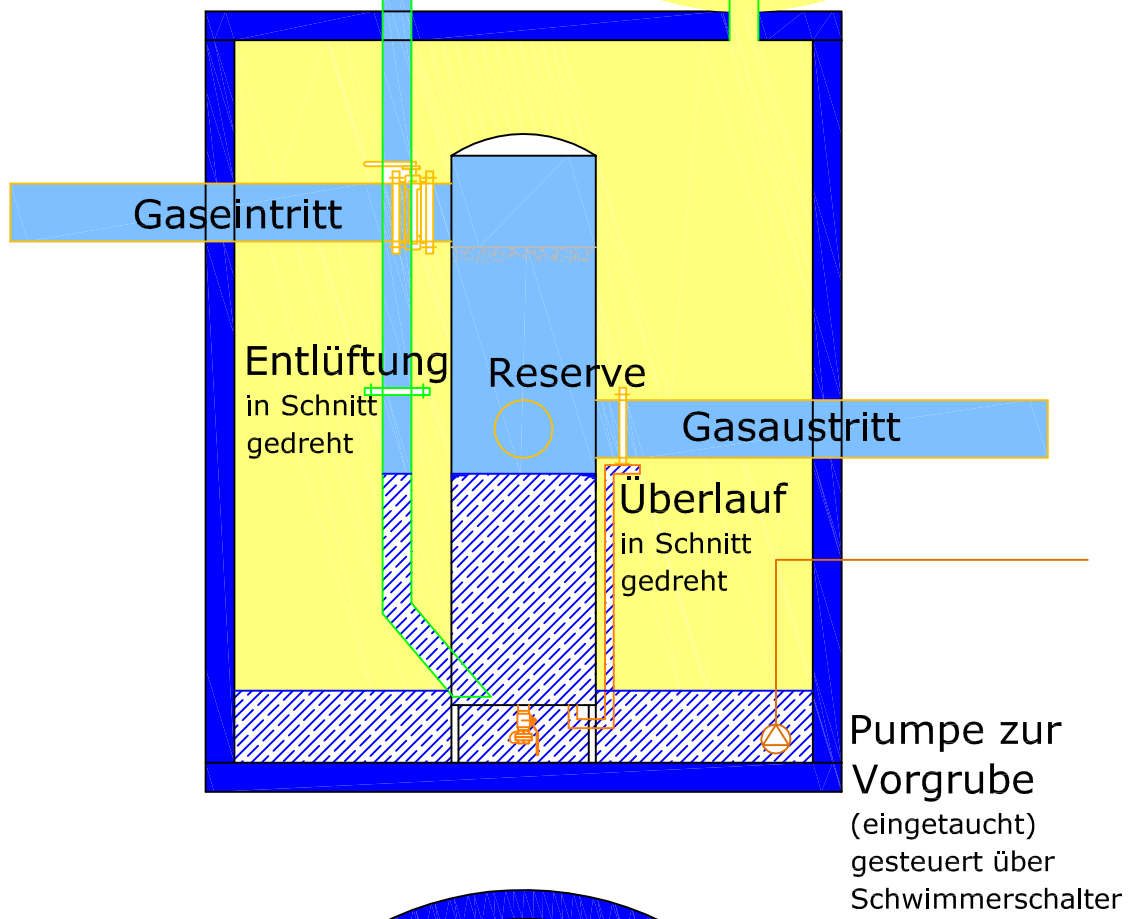
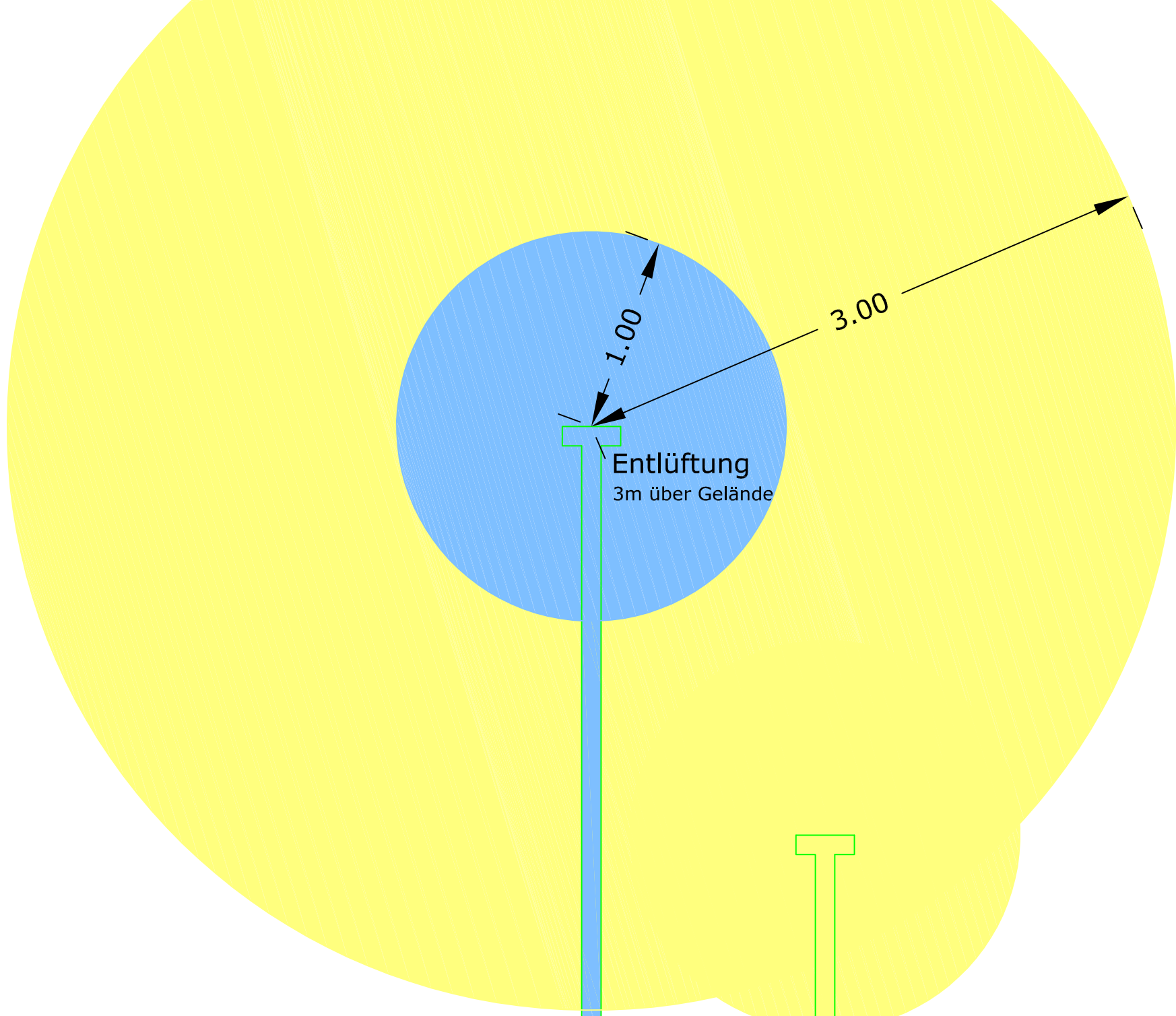
planergy

www.planergy.at



Legende

	Ex-Zone 0
	Ex-Zone 1
	Ex-Zone 2



Legende

	Ex-Zone 0
	Ex-Zone 1
	Ex-Zone 2